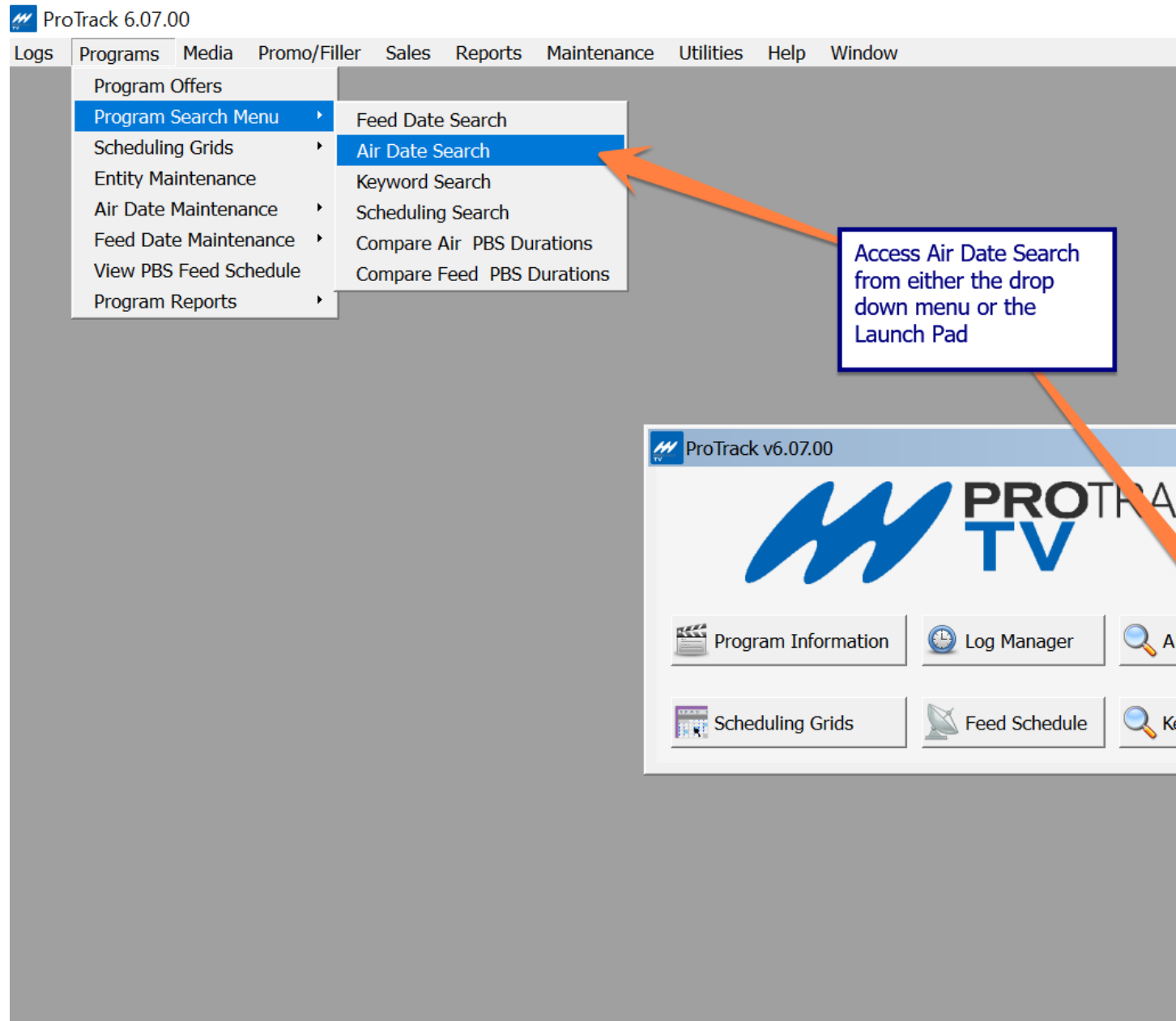


PBCore Exporting - Air Date Search

From the **Air Date Search** Screen:

When using the Air Date Search screen to access the data - users have the option to export information about an individual program



In this example – Air Date Search for 9/26/18



Air Date Search

Minimum Date and Time:
Maximum Date and Time:

Source Code:

Source Detail:

Virtual Channel:

Title: #:

Package Type:

Program Code: Rating: Distributor:

Prog Type:

Stereo:

HDTV:

Topic:

Captioning:

Screen Frmt:

Topic 2:

CC Language:

Content Flag:

Station Defined:

Audio Chnl 3:


Local Und:

Language:

Audio Chnl 4:

Color:

Here are the results:

 Air Date Search Results

File Edit Tools Help

Air Date	Air Time	Package Type	Program Title	Source	SIX
Wed 09/26/18	02:00:00:00	HDBA	ANTIQUES ROADSHOW #1911H	HD01	COM
Wed 09/26/18	03:00:00:00	HDBA	ANTIQUES ROADSHOW #1912H	HD01	IN_L
Wed 09/26/18	04:00:00:00	HDBA	WILD KRATTS #136H	HD01	COM
Wed 09/26/18	04:30:00:00	HDBA	WILD KRATTS #137H	HD01	
Wed 09/26/18	05:00:00:00	HDBA	READY JET GO! #126H	HD01	
Wed 09/26/18	05:30:00:00	HDBA	CAT IN THE HAT KNOWS A LOT ABOUT THAT! #109H	HD01	
Wed 09/26/18	06:00:00:00	HDBA	NATURE CAT #107H	HD01	
Wed 09/26/18	06:30:00:00	HDUB43	CURIOUS GEORGE #210	HD01	
Wed 09/26/18	07:00:00:00	HDBA	PINKALICIOUS & PETERRIFIC #113H	HD01	
Wed 09/26/18	07:30:00:00	HDBA	DANIEL TIGER'S NEIGHBORHOOD #318H	HD01	
Wed 09/26/18	08:00:00:00	HDBA	DANIEL TIGER'S NEIGHBORHOOD #320H	HD01	
Wed 09/26/18	08:30:00:00	HDBA	SPLASH AND BUBBLES #138H	HD01	
Wed 09/26/18	09:00:00:00	HDBA	SESAME STREET #4803H	HD01	
Wed 09/26/18	09:30:00:00	HDUPBS	SUPER WHY! #150Z	HD01	
Wed 09/26/18	10:00:00:00	HDBA	DINOSAUR TRAIN #204H	HD01	
Wed 09/26/18	10:30:00:00	HDBA	PEG + CAT #210H	HD01	
Wed 09/26/18	11:00:00:00	HDBA	SESAME STREET #4803H	HD01	
Wed 09/26/18	11:30:00:00	HDBA	SPLASH AND BUBBLES #138H	HD01	
Wed 09/26/18	12:00:00:00	HDBA	CHARLIE ROSE #24202H	MEDIA UNASSIGNED	
Wed 09/26/18	13:00:00:00	HDBA	NATURE CAT #107H	HD01	
Wed 09/26/18	13:30:00:00	HDBA	WILD KRATTS #136H	HD01	COM
Wed 09/26/18	14:00:00:00	HDBA	WILD KRATTS #137H	HD01	
Wed 09/26/18	14:30:00:00	HDBA	ODD SQUAD #215H	HD01	
Wed 09/26/18	15:00:00:00	HDBA	ODD SQUAD #216H	HD01	
Wed 09/26/18	15:30:00:00	HDBA	ARTHUR #2106H	HD01	
Wed 09/26/18	16:00:00:00	HDBA	ARTHUR #2107H	HD01	COM
Wed 09/26/18	16:30:00:00	HDBA	READY JET GO! #126H	HD01	
Wed 09/26/18	17:00:00:00	HDBA	PBS NEWSHOUR #12363H	HD01	
Wed 09/26/18	18:00:00:00	HDBA	NATURE #3207H	HD01-?	
Wed 09/26/18	19:00:00:00	HDBA	NOVA #4509H	HD01-?	
Wed 09/26/18	20:00:00:00	HDEM	MAYO CLINIC: FAITH - HOPE - SCIENCE #0#	HD01	
Wed 09/26/18	22:00:00:00	HDBA	AMANPOUR AND COMPANY #114H	HD01	
Wed 09/26/18	23:00:00:00	HDBA	NATURE #3207H	HD01	

- For this example, we will export Nature #3207H

Highlight the program to be exported to PBCore and click F-8, or double click on the program, to open up the Program Detail screen

Program Detail

File Edit View Tools Help

Offer Type: Series Use Codes?: Y Series Code: NAAT Program Code: NAAT 003207H

Series Title: NATURE #: 3207 H

Program Title: OWL POWER

Version Desc:

Package Type: HDDBA - HD-Base Distributor: PBS

Program Length: 00:56:47:04 Approx?: N Rating: TVPG - Season:

Package Number: P450998-006 Usage: 09/26/2018 - 10/07/2018 Order: 7 of 13

Program Type: NATURE Stereo: HDTV: 1080i

Topic: UNASSIGNED Captioning: 708 Captions Screen Frmt: 16:9 Full Frame

Topic 2: UNASSIGNED CC Language: English Content Flag: Yes

Station Defined: NO CODES Audio Chnl 3: DVI Local Und: Yes

Language: English Audio Chnl 4: None Color: Color

SERVER: P450998-005 Ends: Tue 05/09/2017 **EXPIRED** (P450998-005)

NOTES

Once in the Program Detail:

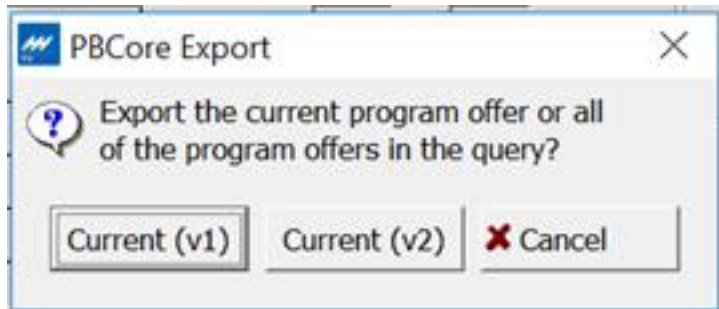
To export information to PBCore – navigate to Tools/PBCore Export; or use the keyboard shortcut of Alt+P

The screenshot shows a software window titled "Program Detail" with a menu bar containing "File", "Edit", "View", "Tools", and "Help". The "Tools" menu is open, displaying a list of options with their corresponding keyboard shortcuts. An orange arrow points to the "Tools" menu. The "PBCore Export" option is highlighted in blue, with another orange arrow pointing to it.

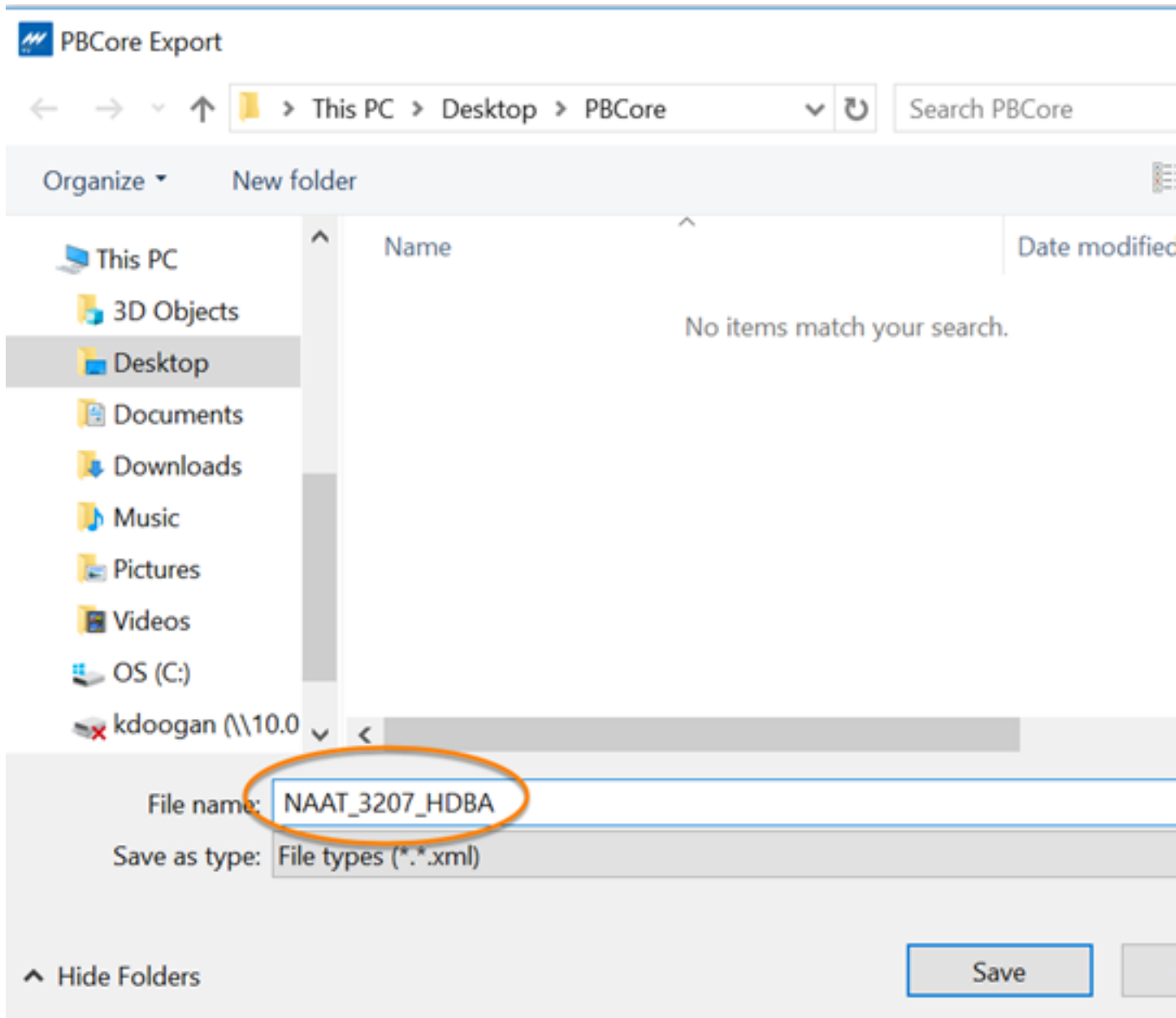
Option	Shortcut
Media Info	F1
Program Info	F2
Air Date Info	F3
Rights Info	F4
Feed Info	F5
Description	F6
Tech Notes	F7
On-Air Offers	F8
Flights	F9
Notes	F10
PBS Feeds	F11
National Underwriters	F12
Program Flags	Shift+F1
Entities	Shift+F2
Producer	Shift+F3
Distributor	Shift+F4
Participants	Shift+F5
Keywords	Shift+F6
Genre	Shift+F7
Advertising	Shift+F8
Shipping	Shift+F9
ProLink Updates	Shift+F10
Version History	Shift+F11
SI Attachments	
ProTrack Export	
PBCore Export	Alt+P
Change Channel	Shift+!

Other visible text in the interface includes: "Offer Type: Ser", "Series Title", "Program Title", "Version Desc", "Package Type", "Program Length", "Package Number", "Program Type:", "Topic:", "Topic 2:", "Station Defined", "Language:", "SERVER: P450", "e: NAAT", "Program Code: NAAT 0", "#: 32", "Distribu", "TVPG", "09/26/2018", "10/07/2018", "708 Captions", "English", "DVI", "None", "**EXPIRED**", "(P450998-005)".

This dialogue box will open



*Please note – ProTrack allows users to save the export as either PBCore Version 1 (v1) or Version (v2). For information about the difference between versions, visit www.PBCore.org
Files are saved as an 'xml' file to a local drive with a naming convention of NOLA_episode#_program type (HDBA, SDBA, HDUE43 etc.)



Export file looks like this and includes all the metadata available in ProTrack for this specific episode

```
<?xml version="1.0" encoding="UTF-8"?>
- <pbcoreDescriptionDocument xmlns:xsi="http://www.w3.org/2001/XMLSchema-instance" xmlns="http://www.pbcore.org/PBC
xsi:schemaLocation="http://www.pbcore.org/PBCore/PBCoreNamespace.html http://v2.pbcore.org/xsd/pbcore-2.1.xsd">
  <pbcoreAssetType>Episode</pbcoreAssetType>
  <pbcoreAssetDate dateType="Produced"/>
  <pbcoreIdentifier source="Series NOLA Code">NAAT</pbcoreIdentifier>
  <pbcoreTitle titleType="Series Title">NATURE</pbcoreTitle>
  <pbcoreTitle titleType="Episode Title">OWL POWER</pbcoreTitle>
  <pbcoreTitle titleType="Episode Number">3207</pbcoreTitle>
  <pbcoreSubject subjectType="Program Type">Nature</pbcoreSubject>
  <pbcoreSubject subjectType="Keyword">Animals</pbcoreSubject>
  <pbcoreSubject subjectType="Keyword">Nature</pbcoreSubject>
  <pbcoreDescription descriptionType="Series Description">NATURE, television's longest-running weekly natural history series
    from the television industry, parent groups, the international wildlife film community and environmental organization
    given to a television program by the Sierra Club.</pbcoreDescription>
  <pbcoreDescription descriptionType="Episode Description">For centuries, owls have been fascinating hallmarks of children's
    over. What actually makes owls so special? Using the camera technology, computer graphics, x-rays and ultra-micros
    world, take a new look at owls in more detail than ever before. The real stories behind how they hunt, how their visio
    fly so silently are influencing 21st-century technology and design, from high-tech aircraft and submarines to innovati
  <pbcoreDescription descriptionType="PSIP Description">How owls hunt and how they fly so silently are influencing 21st-cen
    design.</pbcoreDescription>
  <pbcoreDescription descriptionType="MIS-SHORT Description">How owls hunt and how they fly so silently are influencing 2
    design.</pbcoreDescription>
  <pbcoreDescription descriptionType="Summary Description">How owls hunt and how they fly so silently are influencing 21
    design.</pbcoreDescription>
  <pbcoreAudienceRating source="TV Ratings">TVPG</pbcoreAudienceRating>
- <pbcoreContributor>
  <contributor>BBC and WNET</contributor>
  <contributorRole>Producer</contributorRole>
</pbcoreContributor>
- <pbcoreContributor>
  <contributor>CHRISTIE, PAUL</contributor>
  <contributorRole>Narrator</contributorRole>
</pbcoreContributor>
- <pbcoreContributor>
  <contributor>MOORE, GARY</contributor>
```



```
C:\Users\kdoogan.HQ\Desktop\PBCore\NAAT_3207_HDBA.xml
C:\Users\kdoogan.HQ\Desk... x
<contributorRole>Guest</contributorRole>
</pbcoreContributor>
- <pbcoreContributor>
  <contributor>PAYNE-GILL, MARK</contributor>
  <contributorRole>Guest</contributorRole>
</pbcoreContributor>
- <pbcoreContributor>
  <contributor>UNDERWOOD, JOHN</contributor>
  <contributorRole>Guest</contributorRole>
</pbcoreContributor>
- <pbcoreContributor>
  <contributor>MARTIN, GRAHAM</contributor>
  <contributorRole>Guest</contributorRole>
</pbcoreContributor>
- <pbcorePublisher>
  <publisher>PBS</publisher>
  <publisherRole>Distributor</publisherRole>
</pbcorePublisher>
- <pbcoreInstantiation>
  <instantiationIdentifier source="Episode NOLA Code">NAAT 003207H</instantiationIdentifier>
  <instantiationIdentifier source="House Number">P450998-006</instantiationIdentifier>
  <instantiationIdentifier source="Package Number">450998</instantiationIdentifier>
  <instantiationIdentifier source="Revision">6</instantiationIdentifier>
  <instantiationIdentifier source="Package Type" annotation="HD-Base">HDBA</instantiationIdentifier>
  <instantiationDimensions source="HDTV">1080i</instantiationDimensions>
  <instantiationDuration>00:56:47:04</instantiationDuration>
  <instantiationColor>Color</instantiationColor>
  <instantiationLanguage>eng</instantiationLanguage>
  <instantiationAlternativeModes>ClosedCaptions in English</instantiationAlternativeModes>
  <instantiationAlternativeModes>DVI (Descriptive Video Information)</instantiationAlternativeModes>
  - <InstantiationEssenceTrack>
    <essenceTrackAspectRatio source="Screen Format">16:9 Full Frame</essenceTrackAspectRatio>
  </InstantiationEssenceTrack>
</pbcoreInstantiation>
<pbcoreAnnotation annotation="Language">English</pbcoreAnnotation>
</pbcoreDescriptionDocument>
```